

# ***KILLDEVIL*** **LODGE**



*Photo by: LEE WULFF*

*KILLDEVIL MOUNTAIN, BONNE BAY*

## **LOMOND, NEWFOUNDLAND**

**K**ILLDEVIL LODGE is located at Lomond, a small, neat village on the shores of Newfoundland's beautiful Bonne Bay. It is thirty miles from the Deer Lake station of the Newfoundland Railway and sixty miles by car from Corner Brook, the paper making centre of West Newfoundland.

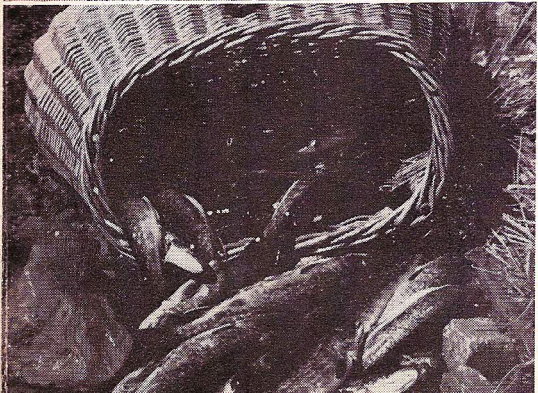
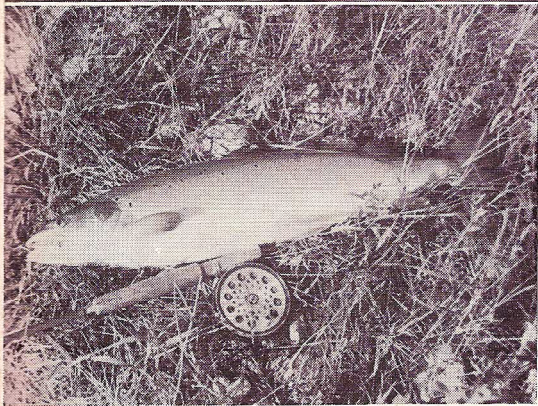
Bonne Bay, aptly named by the early French fishermen who for centuries held possession of these coastal waters is a long, narrow finger of salt water extending inland from the Gulf of St. Lawrence. It is hemmed in by towering mountains that reach a height of more than 2,500 feet within a few miles of the bay. The peaks and steep slopes, mingling bare gray crags with birch and evergreen forest, are reflected in the calm and sheltered waters of this magnificent fiord.

Into the bay come whales, porpoises, giant tuna and an occasional swordfish. Cod, herring and mackerel abound. Fishing boats, ranging from the tiny one-man dories up to deep-sea fishing schooners, go busily in and out of Lomond harbour adding variety and interest to the daily life of villagers and vacationers alike. Cabin cruisers can take passengers on cruises around the bay and to many remote settlements as well as to the hitherto inaccessible salmon rivers of the North coast.

The vacationer who would fish these rivers and enjoy the experience of roughing it in the wilderness will find Killdevil Lodge an ideal place from which to begin his adventure. Visitors interested in folklore and folk-music will find a wealth of material in the Bonne Bay villages where the inhabitants live in quaint simplicity, carrying on their occupations in much the same way as did their ancestors who came from the English West country more than a hundred years ago. Their speech is sometimes Shakespearian, sometimes a mixture of Devon and Dorset dialect interlarded with archaic words and phrases. Their songs range from beautiful Childe ballades and ancient sea chanties to locally composed ballads of shipwrecks and fishing.

Killdevil Lodge and its cabin group stand in a lush meadow at the mouth of the Lomond river which affords excellent salmon and squaretail trout fishing. It is well equipped to provide comfort and relaxation for its guests: large, airy bedrooms with a vista of rugged cliffs, reflecting water and shady trees; a bright, spacious dining room; a games room for dancing and indoor sports; a secluded living room for quiet, leisurely hours of reading, and a tree shaded lawn where one may relax in the sun and absorb the beauty of the bay. Warm days and cool nights add to the visitor's comfort, for rarely does the temperature rise above 80 degrees F. and it falls low enough at dusk to make blankets a necessity for comfortable sleeping. Sufferers from hay-fever will find welcome relief in Newfoundland's hay-fever free climate.

For reservations write Killdevil Lodge, Lomond, Newfoundland. Rates from \$53.00 to \$65.00 (Canadian funds) per week, American plan.



### **Salmon Fishing:**

Excellent Atlantic salmon fishing is to be had in the Lomond River within walking distance of the Lodge. Guests are advised to bring their own tackle. Canoes are not required as the fishing is done by wading.

The famous Humber river, accessible by car, is a large river offering canoe trips and exceptional salmon fishing. The wilderness rivers of Newfoundland's long Northern peninsula are reached by motor boat from Bonne Bay, and Killdevil Lodge is the ideal place to outfit for such a fishing vacation

### **Trout Fishing:**

Sea-run squaretail trout are plentiful in the Lomond river and the other rivers of the area and the landlocked Eastern brook trout may be caught in the many ponds that lie within a short drive of the lodge.

### **Salt Water Fishing:**

Giant tuna and an occasional swordfish come into the quiet waters of Bonne Bay during the summer offering spectacular sport for the Big game fisherman. Mackerel ranging from one pound to three pounds are plentiful throughout the summer and can be caught on light tackle by trolling or casting. Cod, flounders and other fish may be caught on either rod and reel or handlines. Porpoises, dolphins and small whales often enter the Bay in great herds and harpooning them is a thrilling experience.

### **Boating:**

Motor boats make daily trips around the bay. Small boats are available for the use of Lodge guests to whom sailing or rowing in the beautiful harbour may appeal.

### **Swimming:**

Comfortable swimming can be enjoyed in the bay during the warm summer days. The waters are quiet and the days are seldom windy, with a light breeze usually rising about noon and dropping in the evening.

### **Scenic Drives:**

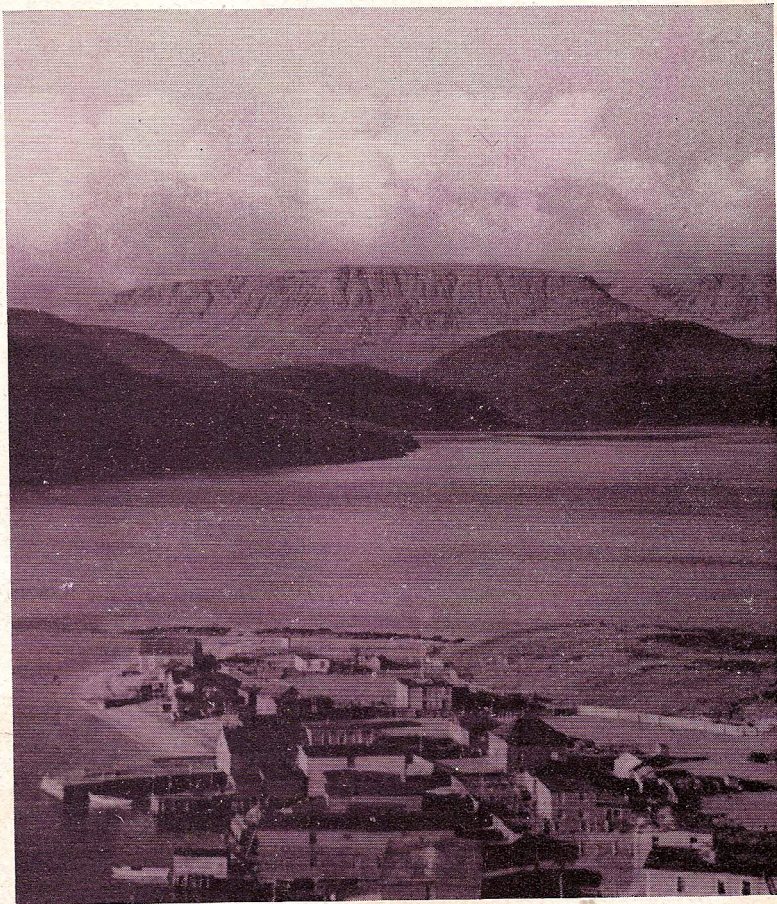
From the lodge the vacationer may travel on scenic drives for distances up to 75 miles through the verdant North country with its complement of evergreens, birches, maples, mountain ash, low shrubs and wild flowers.

### **Hiking:**

Country roads and trails through the woods beckon the hiker and two or three day trips into the rugged back country with a guide offer a glimpse of the wilderness to those who like to turn their backs on civilization.

### **Photography:**

For the photographer there is a never-ending variety of scenes to perpetuate on film. Near Killdevil Lodge one may find small boats or seagoing schooners being built by skilled boatbuilders who have learned the trade from father to son for generations. The impressive mountains and the clear water, the quaint fishermen bending sturdily over their oars, the colorful Northern sunsets, are excellent targets for the roving cameraman.



*Photo by: LEE WULFF*

*BONNE BAY VILLAGE*

*Lomond may be reached:*

By air, 6 hours from La Guardia Field to Gander, Newfoundland.

By boat from New York to Corner Brook.

By boat and train from North Sydney, Nova Scotia to Corner Brook.



*Additional information may be obtained from*

**THE NEWFOUNDLAND GOVERNMENT INFORMATION BUREAU**

620 Fifth Avenue



New York 20, N. Y.